

COLLABORATE® Pro 300 brings traditional SIP/H.323 videoconferencing and Spontania cloud video collaboration into a single appliance to connect up to 25 locations into a single meeting with users joining from anywhere, using any device—pc, mobile, room endpoints or telephone.

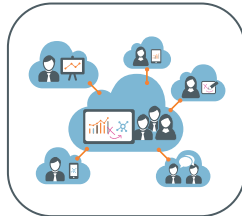
Single-site collaboration is made easy with COLLABORATE Pro 300's ability to stream content, video, whiteboard, and annotations from your PC or mobile devices onto displays wirelessly.



Traditional and Cloud Video Collaboration

Multi-site collaboration with both traditional SIP/H.323 videoconferencing and cloud video collaboration in a single appliance

- + Full HD 1080p SIP/H.323 videoconferencing with data sharing at 1080p quality through wireless or USB
- + Spontania video collaboration meeting with up to 25 participants joining from PC, mobile devices, and room endpoints
- + Real-time collaboration with screen sharing, whiteboarding, annotation, file transfer, recording etc.



In-room Wireless Presentation

Single-site collaboration with ability to stream content, video, whiteboard, and annotations from your PC or mobile devices onto displays wirelessly.

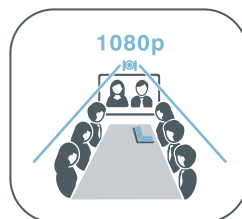
- + Wireless presentations from a laptop or mobile device at 1080p resolution
- + Up to 4 presenters sharing content at the same time
- + Video streaming from a laptop or mobile device to meeting room displays with audio coming through the room's sound system
- + Interactive whiteboard and annotation on shared contents - *Available soon*



Enterprise-Grade Video

ClearOne UNITE® USB PTZ camera guarantees superior video quality for more natural video collaborations.

- + Full HD video quality with 1080p 60fps
- + 12x Optical zoom for close-up views of objects and whiteboard details with absolute clarity
- + 73° wide-angle view to capture all participants in the room
- + Remote control for camera zoom, pan, and tilt functions



Professional quality audio

ClearOne COLLABORATE speakerphone, with its market-leading HDConference™ audio processing, is designed for group collaboration.

- + Three built-in microphones create array with 360° audio pickup
- + Proprietary echo and noise cancellation with full-duplex performance
- + Adaptive modeling for any room acoustics and configurations
- + Flexibility to switch between built-in speaker and external speaker



Key Highlights

- Brings the benefit of both traditional videoconferencing and cloud video collaboration
- Economical and multi-purpose design ensures highest return on investment
- Perfect for both single-site and multi-site interactive collaboration
- Ideal for all sizes of spaces, from huddle rooms to small and medium conference rooms
- Two-year warranty with support and maintenance included



Product Specifications

System Includes:

- COLLABORATE Pro 300 codec
- UNITE 200 PTZ camera
- CHAT® 150C speakerphone
- Remote control
- Spontania Collaboration Meeting Room (one year subscription)
- Power supplies, cables and accessories
- Two-year warranty with support and maintenance

COLLABORATE Pro 300 Codec Appliance

- Video inputs: 1x USB 3.0
- Video outputs: 1x HDMI, 1x Display port
- Audio inputs: USB (Digital audio)
- Audio outputs: USB, S/PDIF
- USB: 4x USB 3.0

UNITE 200 PTZ Camera

- 12x Optical Zoom
- 73° wide-angle view
- USB 3.0, HDMI, & IP output
- Full HD 1080p 60fps
- Control: Remote control, USB (UVC), RS-232
- Pan/Tilt Angles: $\pm 170^\circ$, Tilt: -30° to $+90^\circ$

COLLABORATE USB Speakerphone

- ClearOne HDConference™ audio processing
- Three built-in microphone array with 360° pickup
- Large loudspeaker with Max Output Level: 85 dB SPL @ 1 meter
- Wideband audio frequency response (20Hz-20kHz)

Video Characteristics

- Resolution up to 1080p @ 60 fps (Rx)
- H.261, H.263, H.263+ / + +
- H.264/AVC High Profile – up to 6Mbps

Audio Standards

- 20KHz: AAC-LD
- 14KHz: G.722.1 Annex C
- 7KHz: G.722, G.722.1
- 3.4KHz: G.711, G.723.1, G.728, G.729, AMR (3G)

Data Characteristics

- H.239 support for data sharing
- Resolution up to 1080p
- Data inputs via wireless, datapoint (HDMI-to-USB adapter)

Control

- Remote control
- Web-based management and control
- Telnet API for 3rd-party control
- AMX and Crestron modules

Remote Control Frequency

- 2.400–2.483 GHz

Remote Control Power

- Operating current: 15mA
- Sleeping current: 2 μ A

Directory Services

- 1000+ local number directory
- 10,000+ global number directory
- H.350 support (thru COLLABORATE Central)
- LDAP online directory support,
- OpenLDAP
- Active Search and Filter queries

Environments:

- Huddle Room
- Small and mid-size conference room

Shipping Package:

- Dimension: 21 x 14.5 x 12 (inches)
- Weight: 13 lbs

Part Number

- 930-3001-300

Warranty:

Two-year warranty with support and maintenance included

North America

Tel: +801.975.7200
Toll Free: +800.945.7730
Sales: +800.707.6994
Fax: +801-303-5711
sales@clearone.com

Europe & Oceania

Tel: +44.1454.616.977
global@clearone.com

Asia Pacific

Tel: +852.3590.4526
global@clearone.com

Latin America

Tel: +1.801.974.3621
global@clearone.com

Other product names may be registered trademarks of their respective owners who do not necessarily endorse ClearOne. All rights reserved. Information in this document subject to change without notice. © 2014 ClearOne. DST-0009-001 Rev. 1.1 March 2015.

